

### Low Profile Pivoting Edge Clamp

- This edge clamp is well suited for holding medium to large castings and other similar workpieces. The pivoting jaw exerts clamping force forward and downward simultaneously to keep the workpiece firmly secured.
- Can be easily converted from manual to hydraulic and back again by swapping out a single part.
- The included hardened tool steel serrated gripper is ideal for biting into the workpiece for that extra holding power, but can be easily replaced with any similar edge gripper for more delicate operations. When fastened with two Socket-Head Cap Screws, the angled base ensures this clamp isn't moving. Made in USA.

# The absolute source for Agriculture Tooling Components

Floating  
Clamps



Heavy Duty  
Lifting Pin



Forged Swivel  
Hoist Ring



### Forged Swivel Hoist Ring

- Carr Lane's Forged Swivel Hoist Rings feature a forged lifting ring and simpler construction for easy disassembly.
- Swivel Hoist Rings pivot 180° and swivel 360° simultaneously to allow lifting from any direction.
- Available with inch or metric threads in load capacities up to 10,000 lbs, many with a choice of bolt length.
- Complies with ASME B30.26 and CE.



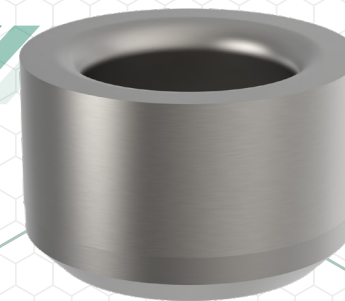
### Threaded Lifting Pins

- Threaded Lifting Pins are single-acting Ball Lock Pins with a solid, one-piece body with three threaded retractable elements for high tension loads.
- Positive locking until released by pushing the button.
- Sturdy forged shackle for heavy lifting. Threaded Lifting Pins are great for retrofitting fixtures with tapped holes.
- Available in both Steel and Stainless.

Lifting Columns



Quick-Ship  
Bushings



Pivoting  
Edge Clamp



### Lifting Columns

- Lifting modules are base units that can be used for controlled lifting and lowering of loads, or simply for convenient height adjustment.
- These sturdy units feature quick manual-hydraulic operation to allow performing a wide range of work at an ergonomically optimum height. Lifting-stroke movement is obtained hydraulically, with fluid being pumped manually by a foot-lever-actuated piston pump into a plunger cylinder.
- When the foot lever is lifted for retraction, fluid returns from the cylinder back to the reservoir due to the weight of the load, at a controlled lowering speed.



# DEPENDABLE AGRICULTURAL TOOLING COMPONENTS

Equipment that meets the demands of those who make a living off their products.



## Floating Clamps

- Floating Clamps are position-flexible clamping devices. The top jaw and bottom jaw together provide a floating clamping point that adjusts to the workpiece before locking, to prevent deformation.
- These combination clamp/supports are often used in conjunction with primary locators and clamps, providing additional support points to reduce machining vibration.
- For custom applications, the standard upper clamping jaw supplied can be replaced by a special clamping jaw.

## DropZero® Modular Zero-Point System

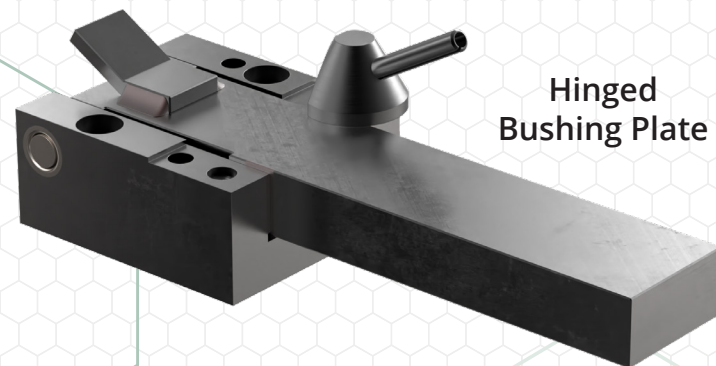
- Our new DropZero® Modular Zero-Point System enables you to completely machine a workpiece in one setup, significantly reducing setup time and fixturing costs.
- Clamping modules can be mounted exactly where required, anywhere on the fixture plate. These modules fit perfectly on all of Carr Lane's 1/2" and 5/8" modular tooling plates and blocks, but can also be used with non-modular tooling.
- Clamping modules elevate the workpiece for machine-spindle clearance, and are stackable for extra height.

## Toggle Clamps

- Toggle clamps offer quick action, positive locking, compact size, and an exceptional ratio of holding force to application force.
- Toggle clamps operate using an over-center locking principle known as a "toggle action."
- In the clamping process, the action of the clamping handle moves the linkage to its center position and then snaps over the center point to lock the linkage.
- All Carr Lane Mfg. toggle clamp accessories are designed for use with CLM toggle clamps.

## Hinged Bushing Plate

- Hinged Bushing Plates are precise, heavy-duty bushing-plate assemblies for large-scale production jigs.
- The swing-away arm is precision ground but left unhardened for installing drill bushings (wear surfaces are hard welded and ground). The arm swings open a full 120° for loading clearance. The mounting base is hardened and precisely ground to provide accurate location.
- The base includes liner bushings as bearings for the hardened pivot pin, and a half-turn latch screw. Hinged Bushing Plates are available in three sizes. Made in USA.
- Arms can be ordered separately, to use as replacements or to switch tooling. The pivot pin can be easily removed by loosening the setscrew, allowing quick arm changeover.

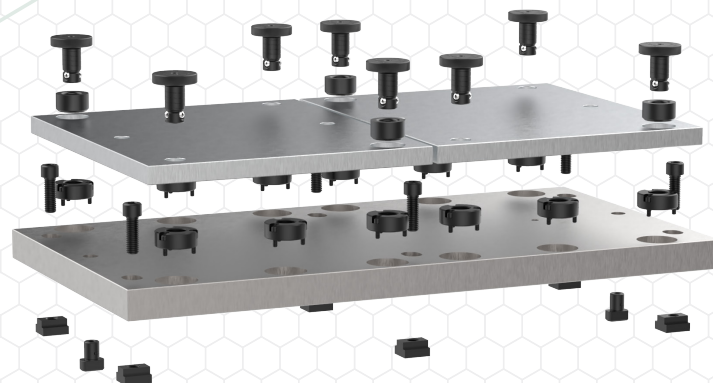


Hinged  
Bushing Plate

DropZero® Modular  
Zero-Point System



Carr Lock System®



Ball Lock Pin